

产品规格书

PRODUCT SPECIFICATION

产品名称

Product Name

520光纤激光器

产品型号

Product Number

LY5210BS10A-105

产品规格

Product Specification

20*10*10mm

东莞市蓝宇激光有限公司

Dongguan Blueuniverse Laser Co, Ltd

THESE SPECIFICATIONS ARE THE PROPERTY OF DONGGUAN BLUEUNIVERSE LASER CO., LTD. AND SHALL NOT BE REPRODUCED OR USED AS THE BASIS FOR THE MANUFACTURE OR SELL OF APPARATUSES OR DEVICES WITHOUT PERMISSION.

日期	制定	品管	审核	核准	Document No. : LY-WI-RD-F0591	REV
						A0

产品参数

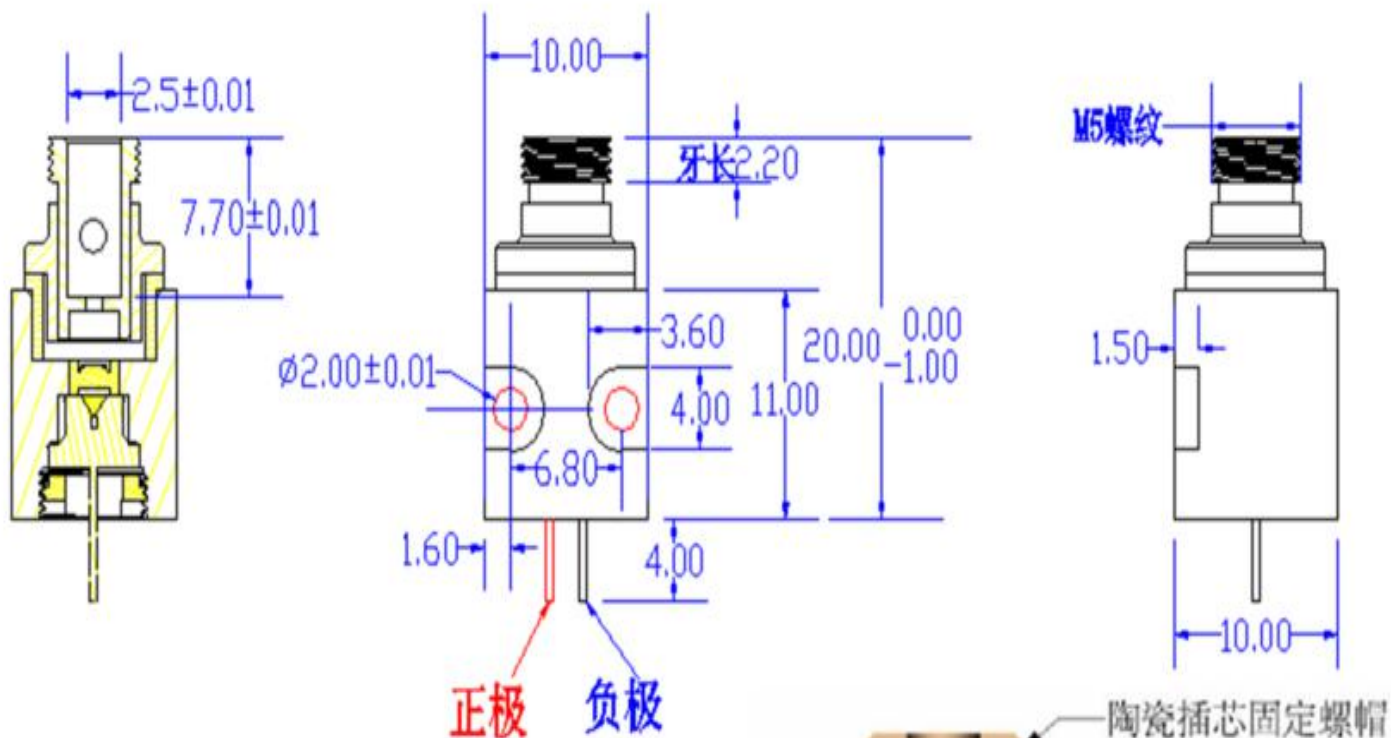
PRODUCT PARAMETERS

TC=25°C

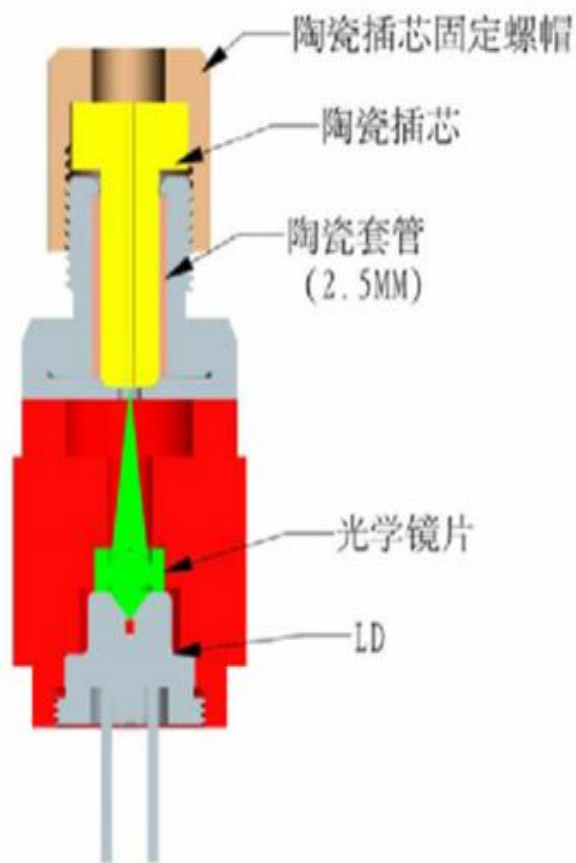
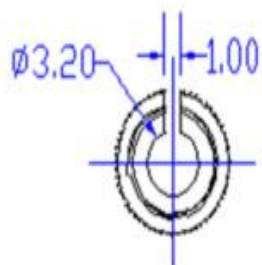
项目 Items	符号 Symbol	最小 Min	标准 Typ	最大 Max	单位 Unit	条件 Condition
LD脉冲功率: LD pulse power	Pp	/	/	/	mW	
LD脉冲电流: LD pulse current	PIop	/	/	/	mA	
光输出功率: Optical Output Power	Po	700	750	/	mW	
工作电流: Working current	Iop	/	1500	1800	mA	
工作电压: Operating Voltage	Vop	/	4.6	5.5	V	
激光波长: Laser Wavelength	λp	510	520	525	nm	
电功率: Electric Power	Wl	/	1.32	1.84	W	
出光效率: Light output efficiency	$\geq 70\%$	工作时间: Service life		10000H		
		平均无故障时间: Mean time to failure		26000H		
工作温度: Working Temperature	0°C至50°C		储存温度: Storage Temperature		-40°C至85°C	
工作模式: Working Mode	continuous		外壳带电极性: Enclosure Polarity		no polarity	
主体结构材质: Main housing material	铜copper		焊接调试结构: Welding debugging structure		304不锈钢 Stainless Steel	
耦合镜片材质: Material of Coupling Lens	光学玻璃 Optical Glass		接口类型: Interface Type		2.5mm光芯螺帽固定 2.5mm light core Nut fixing	

产品尺寸图

DIMENSION DRAWING



光纤固定环



UNSPECIFIED DIMENSIND TOL(GB/T1804-92)

DIM	TOL	COARSENESS	COARSENESS
0.5~3		±0.02	±0.04
3~6		±0.05	±0.1
6~30		±0.1	±0.2
30~120		±0.2	±0.8
120~400		±0.5	±1.2

UNSPECIFIED ANGLE TOL (GB11359-89-M) ±1°

Form No: FR-04-0013 Revision: REYO Date:2016-4-11

注 意 事 项

CAUTIONS

1. 激光模组发射的激光有可能对眼睛造成伤害。激光模组工作时，严禁直接注视其端面，并佩戴防护眼镜。
The laser light emitted by the laser module is likely to injure persons' eye, so do not directly gaze its end surface and wear appropriate safety glasses to prevent laser light when it is working.
2. 器件需要合适的驱动电源，激光模组和电源连接时，电源输出电压应为零；电流调节时应缓慢增加或减少，以免冲击电流损坏器件。
Laser module needs an appropriate laser driver(PCB). When the laser module connects with power supply, please set the output voltage to zero. The adjustment of the current should be slowly increased or decrease to avoid damaging the device.
3. 器件应当存放或工作于干燥环境，防尘等级达到百万级，已免镜片落入灰尘影响光斑。
Keep the device working or storing in a dry environment. The anti-dust grade is over one million, in order to prevent dust inside the lens to affect the laser dot shape.
4. 在较高温度下工作，会增大阈值电流，降低转换效率，加速器件的老化。
Working at high temperatures will increase the threshold current, reduce conversion efficiency and speed up the aging of the device.
5. 输出功率高于指定参数工作，会加速器件老化。
When output power is higher than it's specific parameter of operation, it will accelerate the aging of the device.
6. 连续工作中激光管温度达到50℃要做好散热。
When the operation temperature of the laser diode is over 50degree, please do well heat dissipation of it.
7. 本产品属于静电敏感器件，在人体有良好接地的情况下才可拿取，防静电可采用防静电手镯的方法。
This laser module is an electrostatic sensitive device. Please make sure ground yourself or wear an antistatic wrist strap before you take it.



Dongguan Blueuniverse Laser
Co.,Ltd
400-7777-956
<http://www.bu-laser.Com>

东莞市蓝宇激光有限公司
Dongguan Blueuniverse Laser Co.,Ltd

THESE SPECIFICATIONS ARE THE PROPERTY OF DONGGUAN BLUEUNIVERSE LASER CO.,LTD.AND SHALL NOT BE REPRODUCED OR USED AS THE BASIS FOR THE MANUFACTURE OR SELL OF APPARATUSES OR DEVICES WITHOUT PERMISSION.